

101 PICTURES OF MOUNT SIGNAL / EL CERRO DEL CENTINELA



Mount Signal / El Centinela, with Tomato Farm

Black and White postcard

View from Imperial Valley, California



Mount Signal / Cerro del Centinela

Viewed from the Rosarita Rancho Shooting Complex
in El Centro, California



Mount Signal / Cerro del Centinela

Viewed from the Rosarita Rancho Shooting Complex
in El Centro, California



**All-American Canal viewed with
Mount Signal / Cerro del Centinela
in the background**

Location: Imperial Valley, CA
Agency: PWA
Owner: NARA (SPB)
Medium: B&W Photo

Canal description: Built by Built by Bureau Reclamation.
Length of canal: 81 miles.



**All-American Canal viewed with
Mount Signal / Cerro del Centinela in the Background**

Scenic Photo by
Chris Cook



**All-American Canal viewed with
Mount Signal / Cerro del Centinela in the Background
and a United States / Mexico Border Fence**

Photo by
Frank Rogozienski



**Mount Signal seen in the background of the
San Diego & Arizona Eastern Railroad (Carrizo Gorge)**

Photograph by Anastasia Vellas



Mount Signal

by Trevor Copenhaver

Oil on canvas, 18 by 36 inches



Mount Signal Cafe

Mount Signal / Cerro del Centinela in the Background

Painting by: Margaret Wilson



**Mount Signal, with purple wildflowers
(Desert Sand Verbena)**

Yuha Basin

Pastel Painting by
Nyoman Putra Dewantara
2001



Mount Signal, with Snow

Black and White Postcard

Published by the
Imperial Valley Historical Society
Imperial, California.



Mount Signal, with Egrets in foreground

Color postcard



Cuauhtémoc Rodríguez

El Centinela en 1967

1994. Inta china sobre cartulina, 73x93 cm

Nació en Mexicali en 1954. Dibujante y diseñador gráfico, ha desarrollado con amplitud la técnica del puntillismo.

Realizó diversos trabajos de diseño gráfico para libros y revistas de la entidad y ha participado en exposiciones locales y nacionales. Actualmente trabaja para el Instituto de Cultura de Baja California, en la Galería de la Ciudad de Mexicali.



Mount Signal
From Town of Ocotillo, California

Photograph by Terry Falke
1998



Irrigated Farm
Imperial valley, California
(Mount Signal in background)

Photograph by Terry Falke
1998



Mount Signal, Mexico

Photograph by Anastasia Vellas,
Brawley, California



Photograph of Mount Signal with the All American Canal

by Leo Hetzel

Image courtesy of the Imperial Valley Historical Society's
Pioneers' Museum, Imperial Valley, California.



Photograph of Mount Signal with Snow

by Leo Hetzel

Image courtesy of the Imperial Valley Historical Society's
Pioneers' Museum, Imperial Valley, California.



Photograph of Snow on Mount Signal
by Leo Hetzel

Image courtesy of the Imperial Valley Historical Society's
Pioneers' Museum, Imperial Valley, California.



West Side main Canal and Signal Mountain

near El Centro, California

Black and White Postcard



Mount Signal, viewed from Imperial Valley, California, U.S.A.

▪

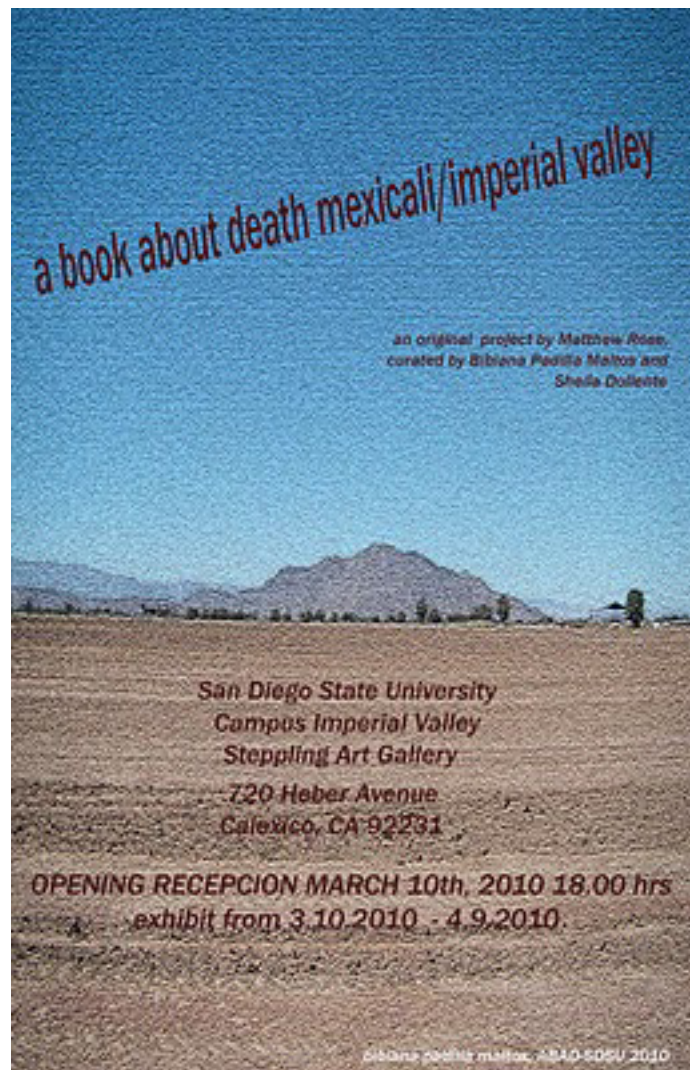


**Early construction on the All American Canal,
with Mount Signal in the background**



Camino al Centinela Bajo Lluvia de Flores

Julio Ruíz



Announcement card, 2010

A BOOK ABOUT DEATH MEXICALI / IMPERIAL VALLEY

an art exhibition at the Stepling Art Gallery
California State University
Calexico, California

Curated by

SHEILA DOLLENTE & BIBIANA PADILLA MALTOS



Mount Signal

(on the Mexican border, at the south of the Imperial Valley)

Color Photograph by
Gary Graefen



Mount Signal and the All American Canal, Imperial Valley, California

Photograph by Darrell Byrd



**Mount Signal seen from a field of sugar beets,
Imperial Valley, California**

Photograph by Darrell Byrd



Panoramic View of Mount Signal, from Imperial Valley, California

Snapshot by Allan McCollum, 1999



Panoramic View of Mount Signal / Cerro del Centinela, from Mexico

Photograph by Steven G. Aichele, April 21, 2007

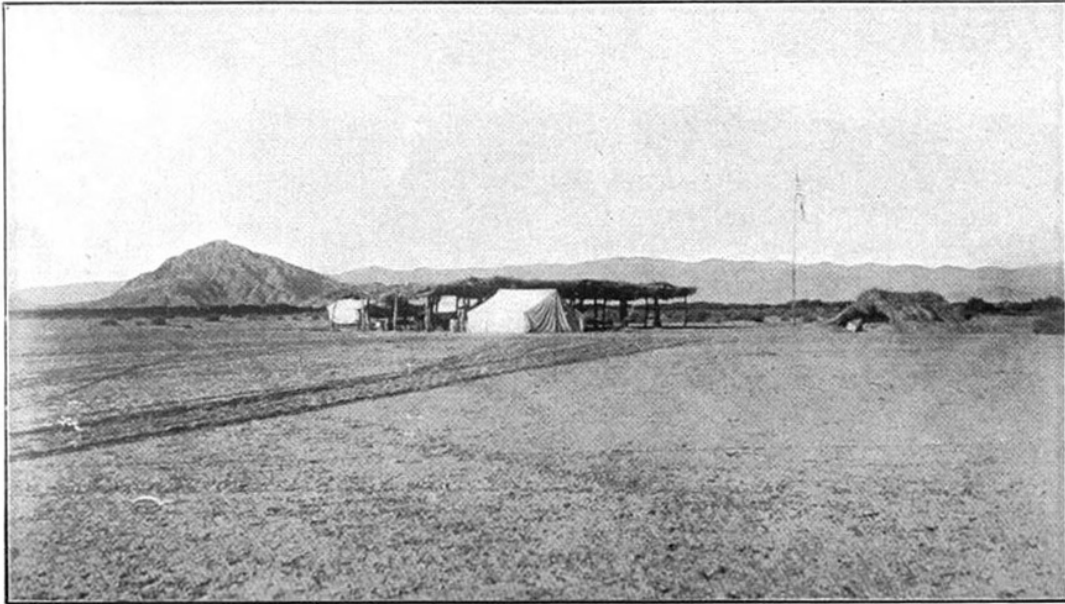
Taken from the dirt road heading to the pumping station on the north east flank of the
mountain



**Mount Signal Seen from Cantaloupe Field,
on the Mexican border, Imperial Valley, California**

Dorothea Lange, June 1938

From the Farm Security Administration-Office of War Information Collection, 1935-1945
Prints and Photographs Division, Library of Congress

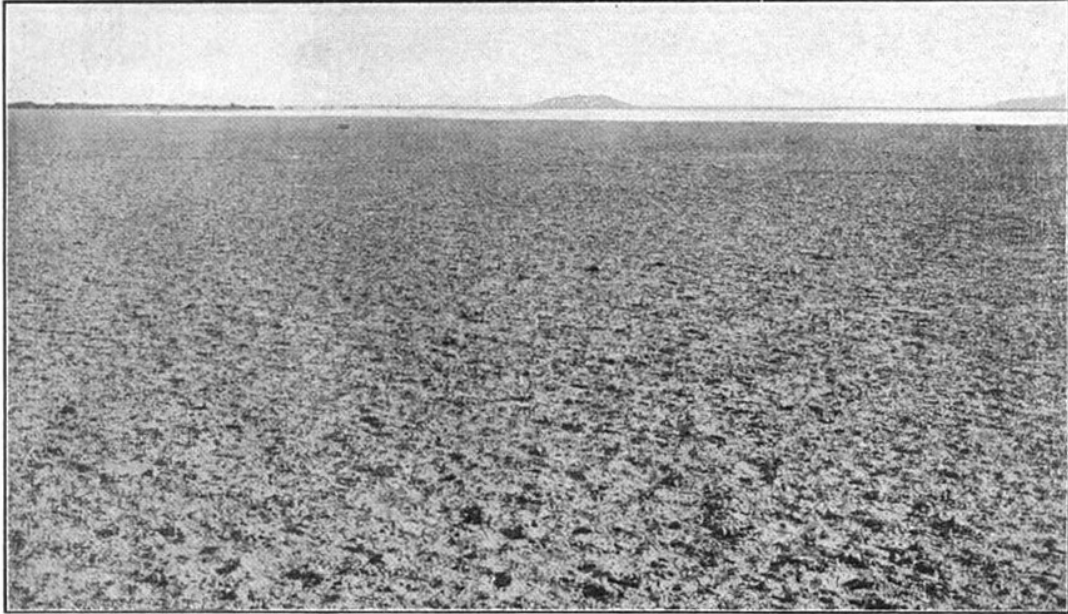


The Engineers' Camp at Blue Lake in 1900 was an Inviting Spot

THE ENGINEERS' CAMP AT BLUE LAKE, 1900

From the book:
**THE STORY OF THE
FIRST DECADE
In Imperial Valley, California**

by
EDGAR F. HOWE and WILBUR JAY HALL
1910



FRONTISPIECE. Untrodden Desert and Alluring Mirage Constituted the Site of the City of Imperial until 1900

IMPERIAL, CALIFORNIA

(with Mount Signal in the background)

From the book:
**THE STORY OF THE
FIRST DECADE**
In Imperial Valley, California

by
EDGAR F. HOWE and WILBUR JAY HALL
1910



Mount Signal Sunset, Imperial valley, California

Photograph © Henry D. Detwiler and Bob Miller



US Border Patrol remote camera tower

Pinto wash is beyond tower with Mexico on the far side
Mount Signal in background

Photo by Florian
September 26, 2003



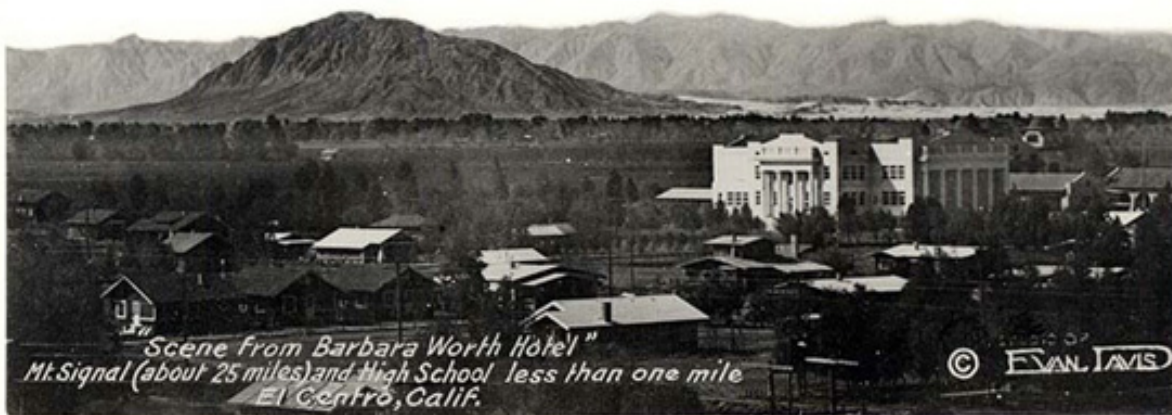
Mount Signal (in Mexico) across a field west of Calexico

Photo by Florian
September 26, 2003



Mount Signal (in Mexico) across a field west of Calexico

Photo by Florian
September 26, 2003



**Photo Postcard of Central Union High School, El Centro
with Mount Signal in the background**

View from the Barbara Worth Hotel

circa 1910



Mount Signal, Imperial Valley, 1953

Photograph by Richard Steinheimer

From the December 1953 issue of RAILROAD MAGAZINE



Mount Signal, seen from Blue Angel Peak

about 6 miles east of Jacumba in the Jacumba Wilderness
some 50 meters north of the border fence

Photograph by Brian McNeece
2002



Cerro del Centinela

From:
Discover Baja California
Virtual Gallery



Imperial Valley Fields

Photograph by Raphael Vignes

Taken on September 2, 2006

© All rights reserved



Yuha Desert

Photograph by Raphael Vignes

Taken on September 2, 2006

© All rights reserved



Mount Sentinel 001 (El Cerro del Centinela)

Photograph by Ken Tittle

Taken on September 29, 2006

© All rights reserved



Farmland at Sunset

Photograph by Ken Tittle

Taken on September 29, 2006

© All rights reserved



Fields and Mount Signal

Photograph by Ken Tittle

Taken on September 29, 2006

© All rights reserved



Mount Signal at Sunset

Photograph by Ken Tittle

Taken on February 23, 2007

© All rights reserved



Mount Signal Sunrise

Photograph by Ken Tittle

Taken on October 13, 2007

© All rights reserved



Mount Signal

Photograph by Jennifer Sprong & JPSPhotography

Taken on July 6, 2007

© All rights reserved



Mount Signal II

Photograph by Jennifer Sprong & JPSPhotography

Taken on July 6, 2007

© All rights reserved



City Guardian

El Centinela a lo lejos; el legendario guardian de la ciudad

Photograph by Cesar Ortiz

Taken on January 18, 2007

© All rights reserved



El Centinela

El Centinela vista en plano lateral (jajajaa) desde el lado gringo

Photograph by rikartho

Taken on August 20, 2005

© All rights reserved



Mount Signal

Photograph by Margaret Brown

Taken on November 21, 2007

© All rights reserved



Imperial Valley sunrise over band of sheep. Mt. Signal rises in the background.

Photograph by bugguyak

Taken on July 11, 2006

© Broadbent Livestock Company. All rights reserved



hacia donde mira el centinela?

Photograph by The Bicktor's mxli 2007

Taken on February 22, 2008

© All rights reserved



Mt. Signal (El Centinela) and the All American Canal in California

Photograph by Jose Ramon Avina

Taken on May 6, 2005

© All rights reserved



Irrigation canal, Imperial Valley, Mount Signal

Photograph by Gary Nafis

Canal is a natural habitat for
Bufo woodhousii woodhousii — Rocky Mountain Toad



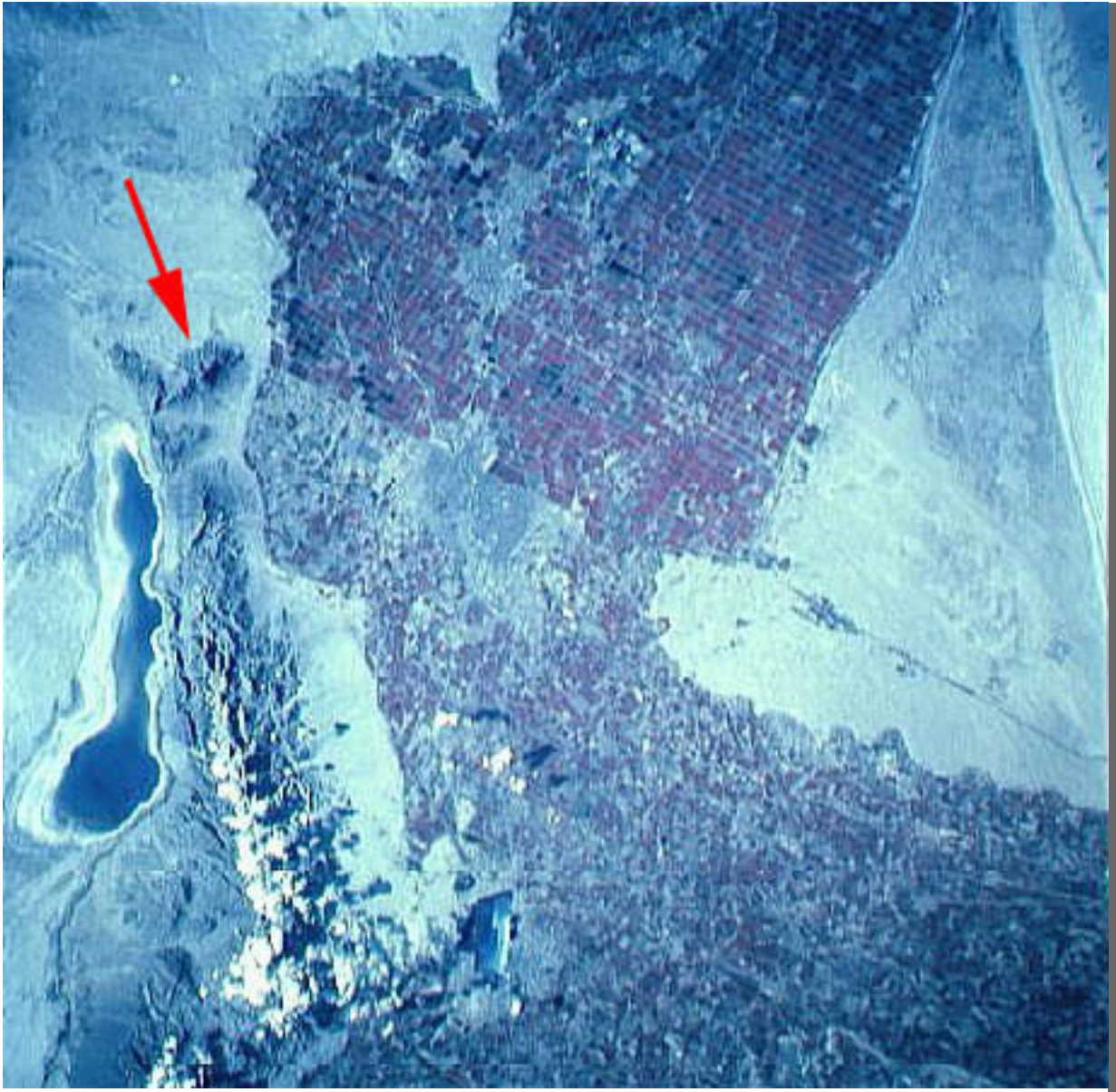
Mount Signal, seen from above the Imperial Valley, California

Photograph by Michael J. Rymer



**Mount Signal during the 7.2 magnitude earthquake
that hit on Sunday, April 4, 2010**

The Holtville Tribune



Mount Signal / Cerro del Centinela, satellite photo

Mexican / U.S. Border — Valle Mexicali / Imperial Valley



The Imperial Valley, California and Arizona on Earth (with Mount Signal / El Centinela, lower left)

Gemini 5 photograph of the Imperial Valley in California looking northeast. The Salton Sea, about 60 km long, is at the left of center in the foreground. Left of that is Joshua Tree National Monument. To the right are farmlands.

The U.S./Mexico border is at the right and Arizona is in the background. The San Andreas fault runs behind the Salton Sea. (Gemini 5, S65-45747)



**Goodrich ("Goodie") Simmons
Leader of Mount Signal Hike, on top of the mountain**

The leader of the Campfire Girls of the McCabe area

was Opal Eshelma



COLORADO DESERT AND SIGNAL MOUNTAIN

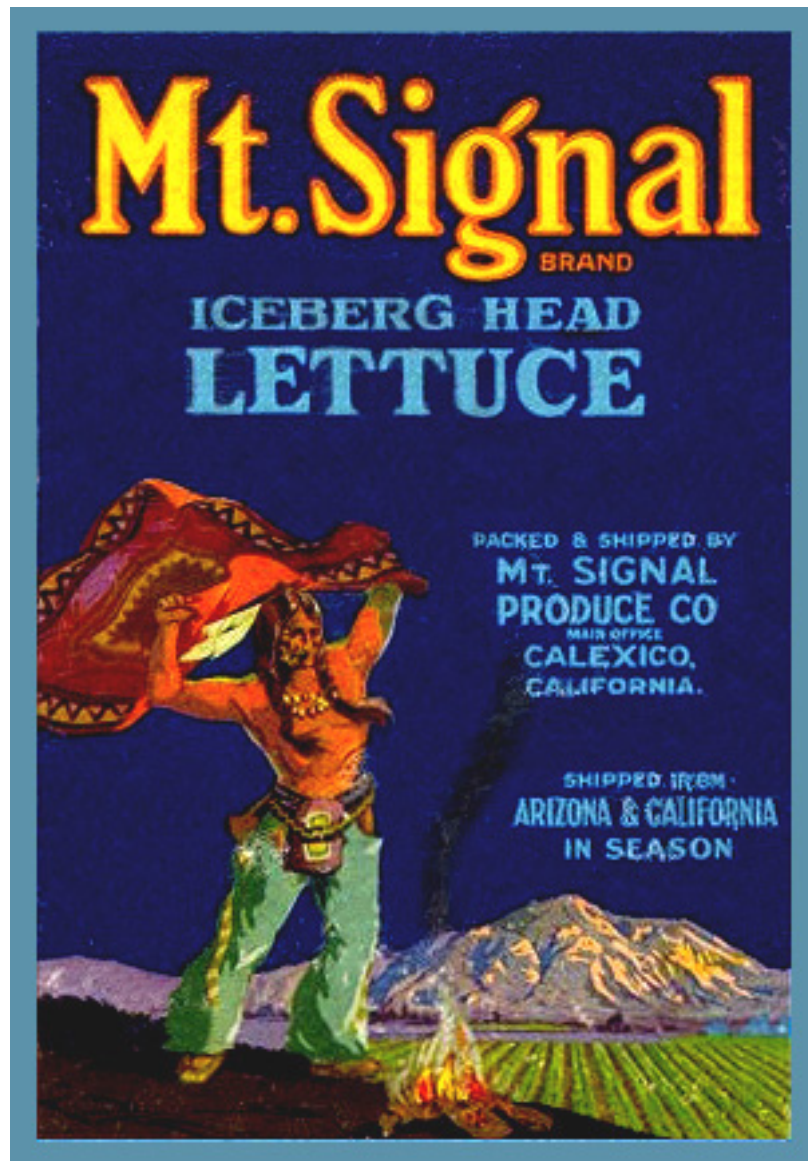
Colorado Desert and Signal Mountain, California

United States Pacific Railroad Exploration and Survey, 1856. Tinted lithograph, 6" x 9"

In the 1850's the U.S. government ordered exploration and surveys done, primarily for the purpose of determining a route for a trans-continental railroad. (U.S. Pacific Railroad) As a part of this exploration a team of naturalists and artists accompanied the expedition, and their work was published as a part of the official report.



**Mount Signal Brand Imperial Valley Melons
Crate Label**



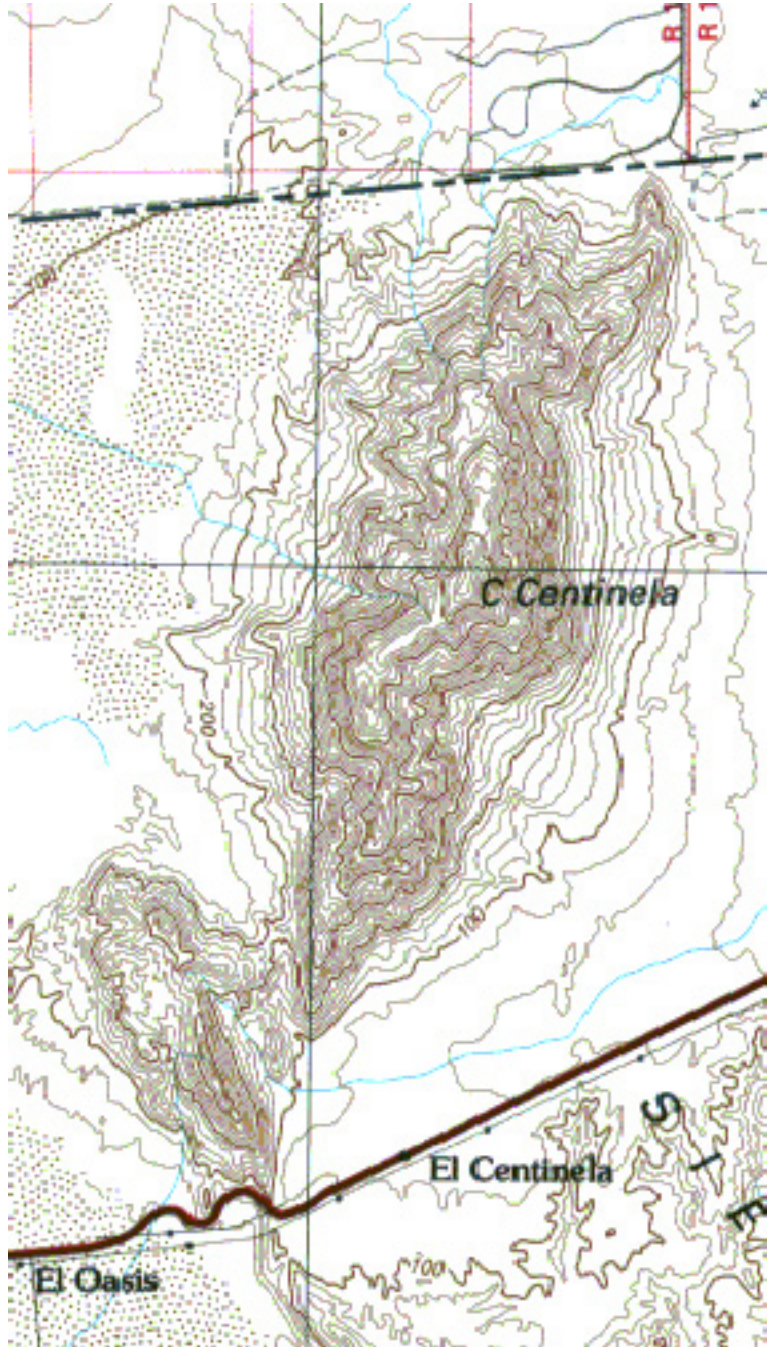
Mount Signal Brand
Iceberg Head Lettuce Crate Label



Insignia from Melon Wrap (detail)

Mt. Signal Produce Company, Calexico

vintage paper, used to wrap produce



**Topographical map of
Cerro del Centinela (Mount Signal),
in Baja California, Mexico.**



**Sign for the Mount Signal Cafe,
Imperial Valley, California**



**Sign for the Mini Storage
with Mount Signal Image
1999**

On Highway 111, Calexico, Imperial Valley, California



Painted Mural, with Image of Mount Signal

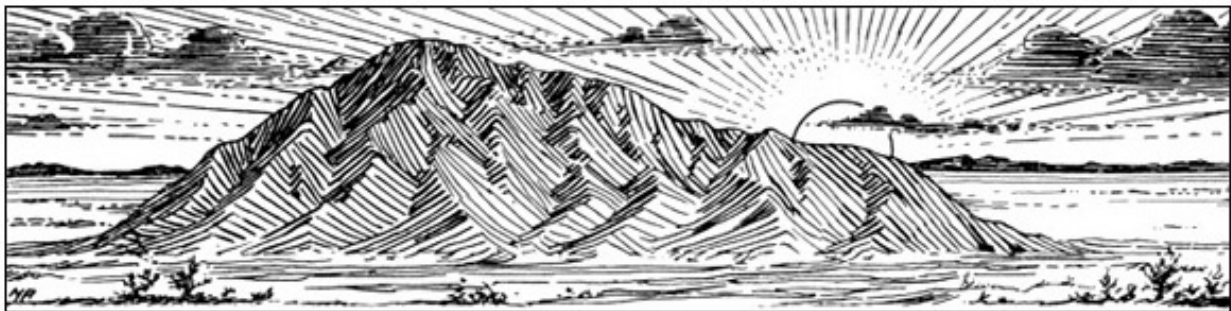
Allen and Helen Mains Elementary School
Calexico, Imperial Valley, California



**Painted Sign for Imperial Valley BMX
with Image of Mount Signal
1999.**

(see the actual mountain in the background)

Imperial Valley BMX is a volunteer staffed, non-profit organization in El Centro, Imperial County, California, which operates a BMX (bicycle moto-cross) race track



I

Drawing of Mount Signal

by Norton Allen, circa 1945

From Chamber of Commerce brochure, Calexico, California



Drawing of Mount Signal

Artist unknown

From Hotel De Anza sales brochure, Calexico, California. Circa 1945



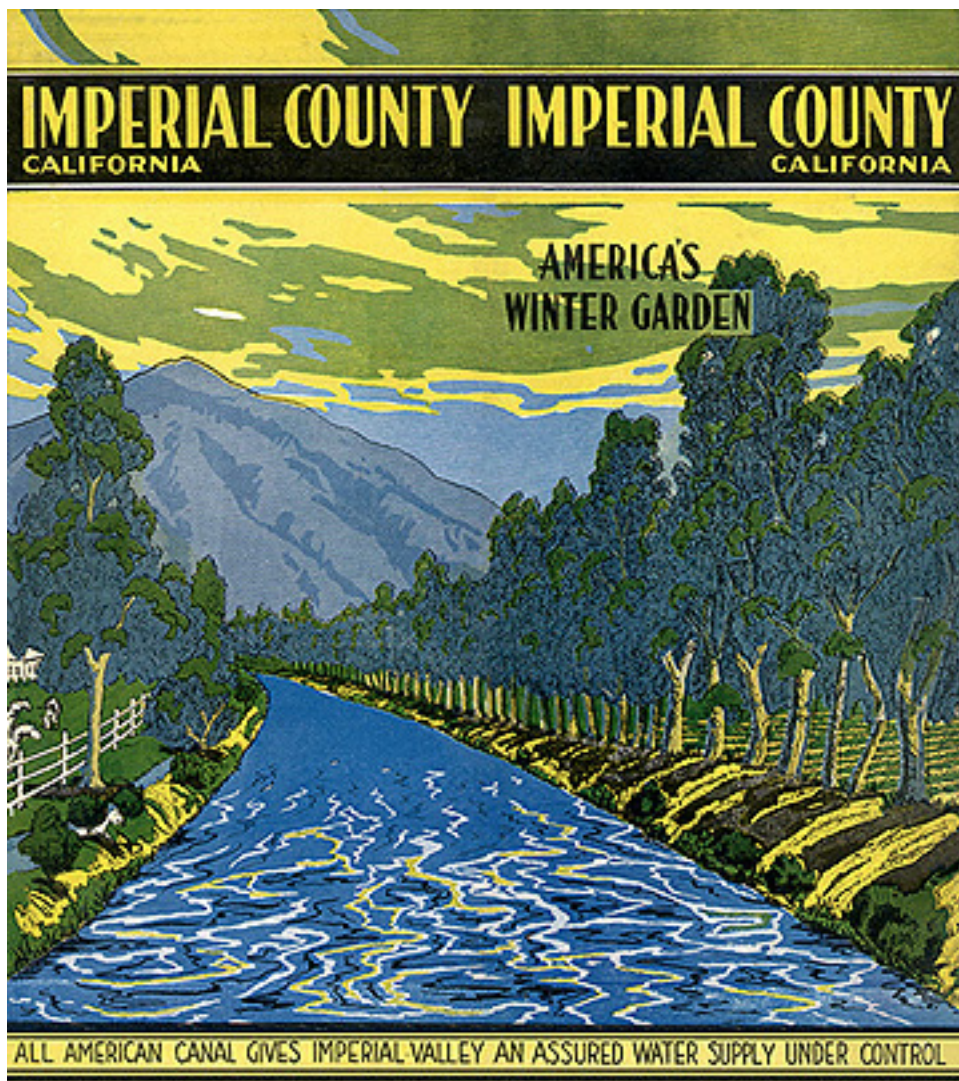
**Sierra Packing Company Logo,
with Mount Signal**

Courtesy Sierra Packing Company,
Holtville, Imperial Valley, California



**U.S. Postal Cover
with Image of Mount Signal
1934**

Commemorating the groundbreaking
for the All American Canal



Brochure with Image of Mount Signal and the All American Canal

Imperial County Board of Trade
Circa 1935



**Company Logo for Sunscape Cards
with Image of Mount Signal**

Courtesy Sunscape Cards,
Seeley, Imperial Valley, California



**SUN REYS logo
with Mount Signal**

SUN REYS News Letter
is published bi-monthly by
El Centro Chamber of Commerce and Visitors Bureau
1095 South Street, El Centro, CA 92243

Imperial Valley College Foundation logo
with Image of Mount Signal



Imperial Valley College Foundation logo
with Image of Mount Signal



STONE SIGN AT IMPERIAL VALLEY COLLEGE, WITH MOUNT SIGNAL PROFILE

2010 Photograph by
JOSELITO VILLERO



**Official Imperial County Seal
with Image of Mount Signal**

Courtesy Imperial County Administrative Offices,
Imperial County, California



Imperial County Centennial Logo
with Mount Signal

© All rights reserved



Drawing for book cover, with Mount Signal

by Mary E. Alexson

from the book
PIONEER WOMEN OF THE IMPERIAL VALLEY
by Sally Heineke

Published by the Imperial Valley Historical Society, 1993



Official Imperial County Pin with Mount Signal

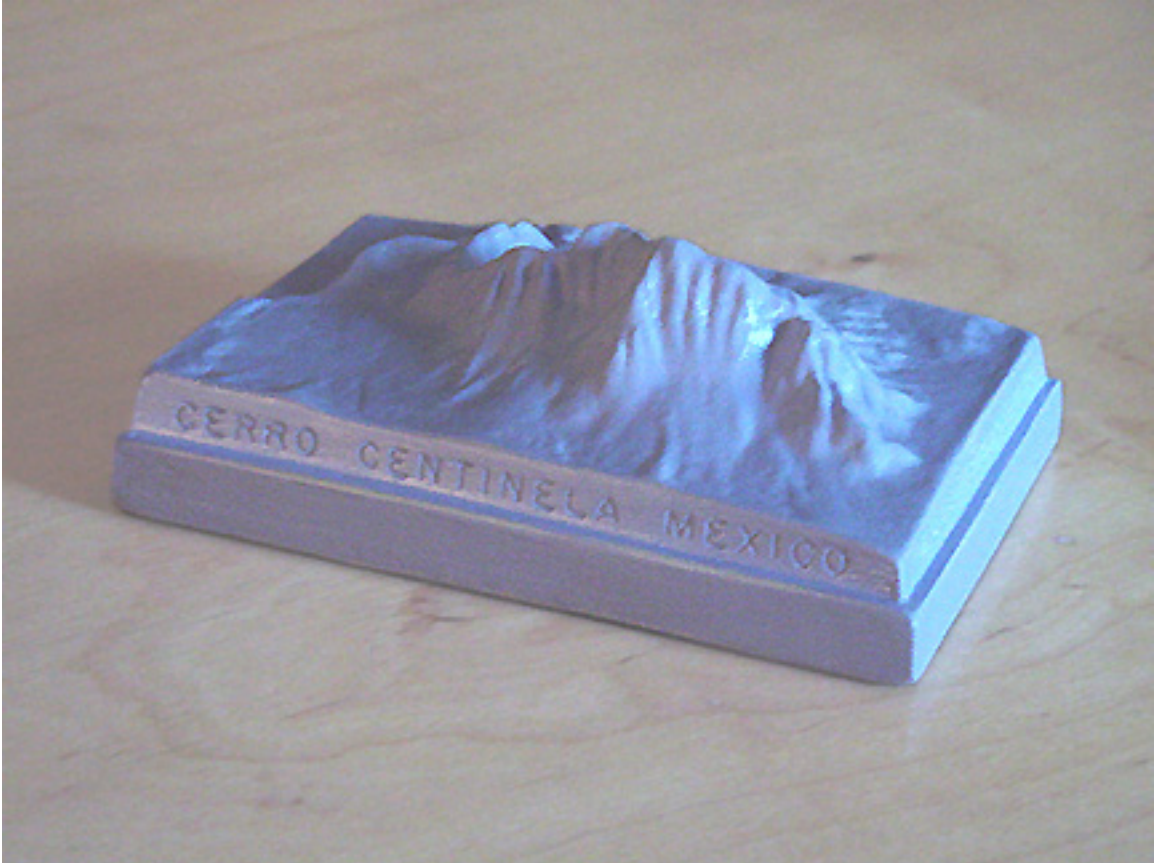
Baked enamel on brass, one inch in diameter



Imperial County Historical Society Key Ring with Mount Signal

Printed rubber, 2 ¼ inches in diameter

Other regional "pioneer" emblems depicted: the Old Plank Road,
a Gold Prospector, a Fresno Scraper, and an Irrigation Canal



Souvenir Model of Mount Signal / Cerro del Centinela

by Allan McCollum

Enamel on plaster, 2 x 6 x 4 inches



Mount Signal, Imperial Valley, California.

Black and White Postcard

One of a series of Mount Signal postcards
published by the Barbara Worth Hotel



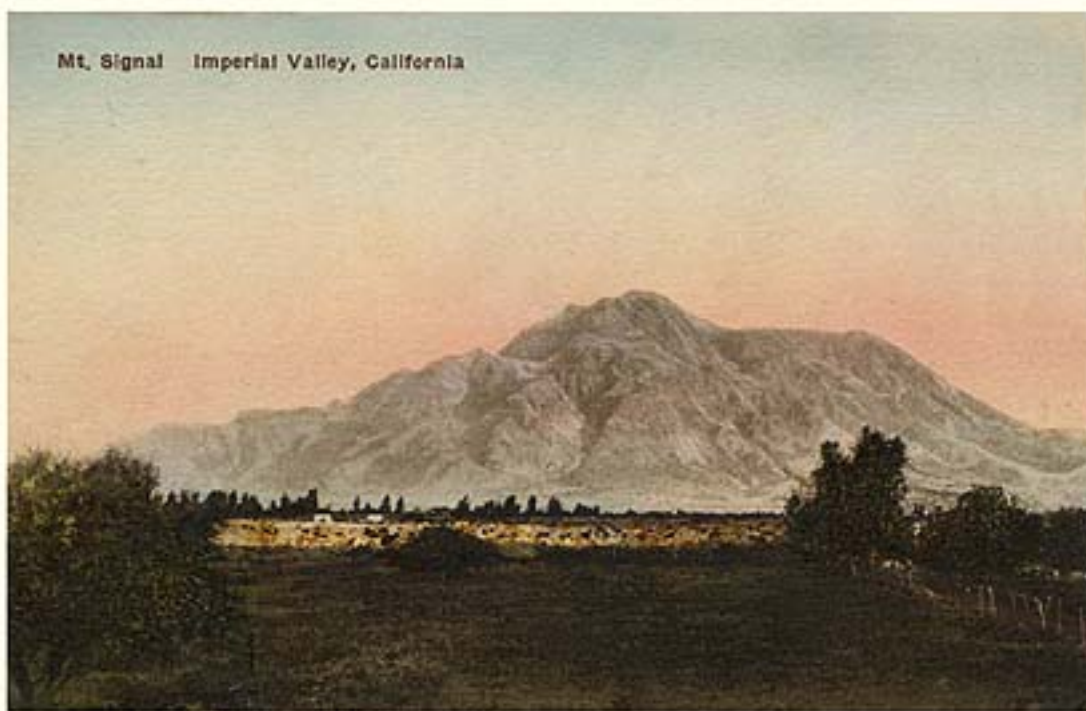
MT. SIGNAL, IMPERIAL VALLEY, CALIFORNIA.

112851

Mount Signal, Imperial Valley, California.

Color Postcard

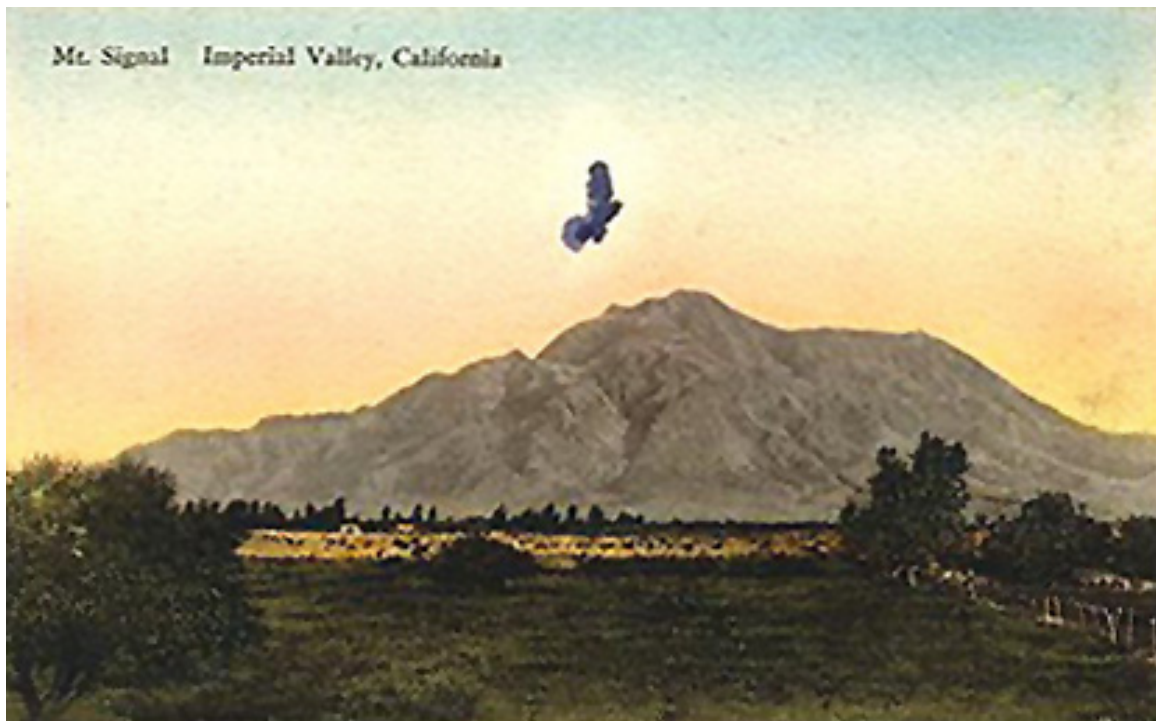
One of a series of Mount Signal postcards
published by the Barbara Worth Hotel



Mount Signal, Imperial Valley, California.

Tinted Color Postcard

One of a series of Mount Signal postcards
published by the Barbara Worth Hotel



Mount Signal, Imperial Valley, California.

Tinted Color Postcard (with bird)

One of a series of Mount Signal postcards
published by the Barbara Worth Hotel



**Harvesting alfalfa
with Mount Signal in background
Imperial Valley, California.**

Color Postcard. Photography by James E. Kuhn

One of a series of postcards published by
Sunscape Cards in Imperial Valley, California



Mount Signal and aerial view of the Imperial Valley, California

Color Postcard. Photography by James E. Kuhn

One of a series of postcards published by
Sunscape Cards in Imperial Valley, California



Mount Signal and Irrigation Canal, California

Color Postcard. Photography by James E. Kuhn

One of a series of postcards published by
Sunscape Cards in Imperial Valley, California



**Near Calexico, Imperial County, California
with Mount Signal in Background**

circa 1900 - 1915

One of a series of Magic Lantern Slides in the Berkeley Geography Collection



**New River, Calexico, Imperial County, California
with Mount Signal in Background**

circa 1900 - 1915

One of a series of Magic Lantern Slides in the Berkeley Geography Collection



**Asparagus beds, El Centro, California
with Mount Signal in Background**

circa 1900 - 1915

One of a series of Magic Lantern Slides in the Berkeley Geography Collection



Mount Signal seen from the Eshelman Ranch

Opal Eshelman

1974

Oil on Canvasboard 16" x 20"



El Centinela

Rubén García Benavide

2000

Acrylic on forto-flex
60 ½ x 55 inches



Guardian of the Valley

Ginger Ryerson

1997

Oil on canvas
24 x 30 inches



First Light

Ginger Ryerson

2000

Oil on canvas
20 x 35 inches



New River Wetlands

Milton Brummett

1999

Oil on canvas
25 ½ x 35 ½ inches



Westside Main

Milton Brummett

1999

Oil on canvas
25 ½ x 35 ½ inches



Mount Signal from Thompson's Crossing

Milton Brummett

1999

Oil on canvas
25 ½ x 35 ½ inches



Morning at Mount Signal

Anastasia Vellas

1999

Color Photograph
20 x 24 inches



From the Shadows at Mount Signal

Anastasia Vellas

1999

Color photograph
20 x 24 inches



Sunset at Seeley

Anastasia Vellas

1999

Watercolor on paper
16 x 20 inches



Movin' on the Grass

Patrick Waters

1979

Watercolor on paper
21½ x 39 inches



Mount Signal

Joanne Addell

1999

Oil on Canvasboard
17 ½ x 29 ½ inch



Crested Egrets

Jordan Mora

~1999

Oil on Canvasboard
20 x 16 inches



Mount Signal

Tom Spandling

1999

Oil on Canvasboard
16 ½ x 21 inches

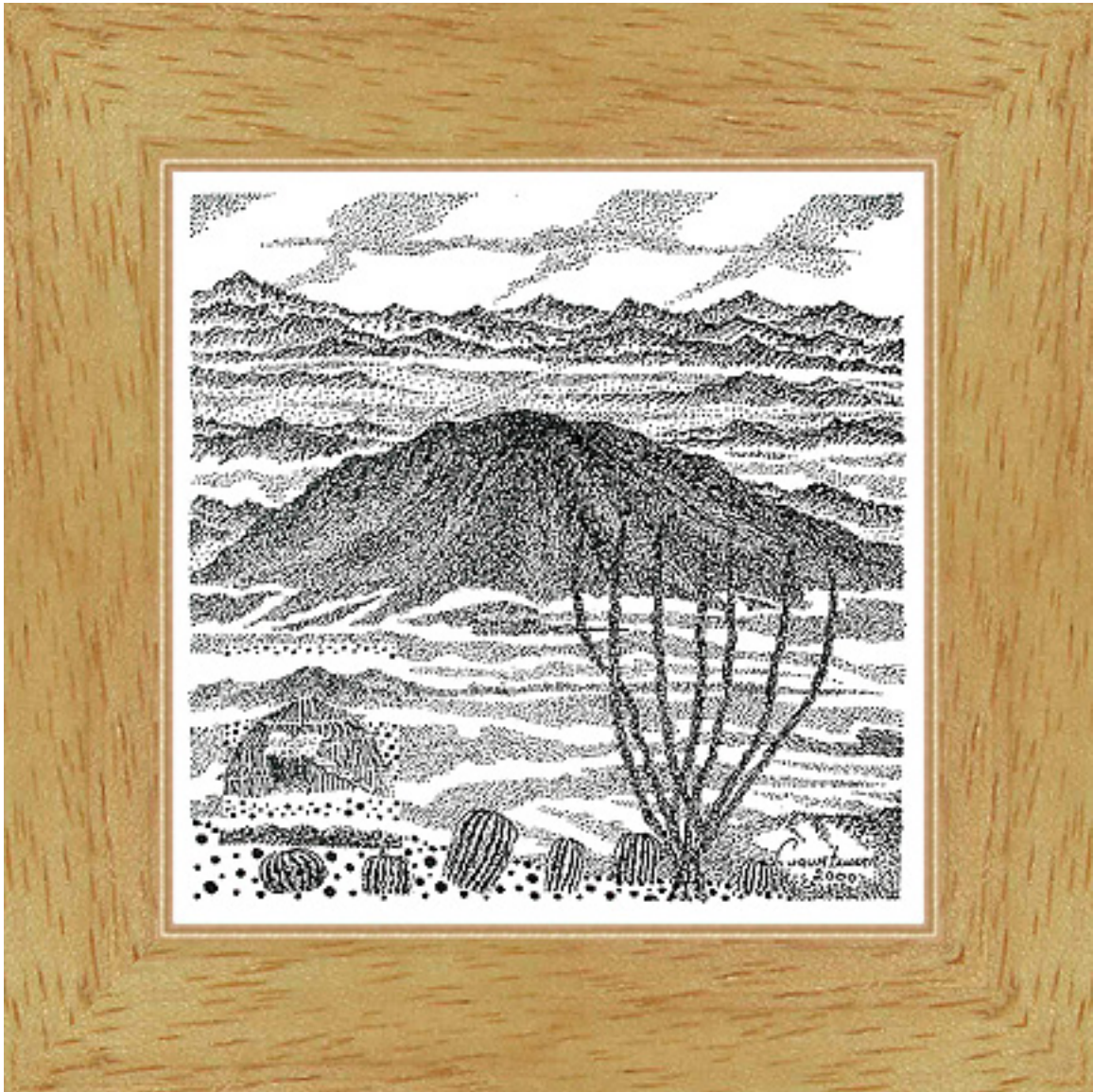


Mount Signal

Marvin Wieben

1999

Color Photograph
11 x 14 inches



Centinela I

Cuauhtémoc Rodríguez

1999

India ink on Board
5 x 5 inches

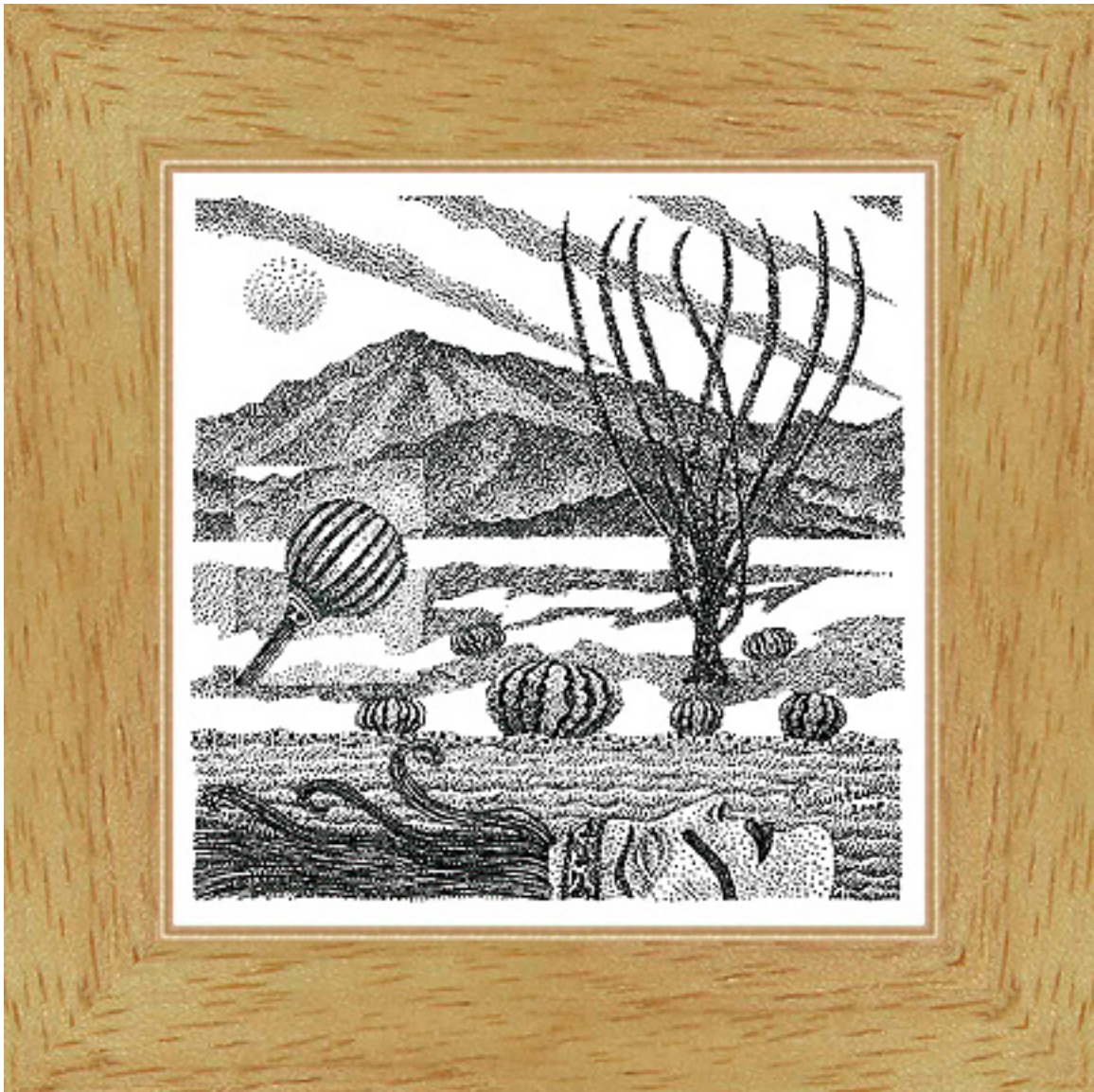


Centinela II

Cuauhtémoc Rodríguez

1999

India ink on Board
5 x 5 inches



Centinela I I I

Cuauhtémoc Rodríguez

1999

India ink on Board
5 x 5 inches

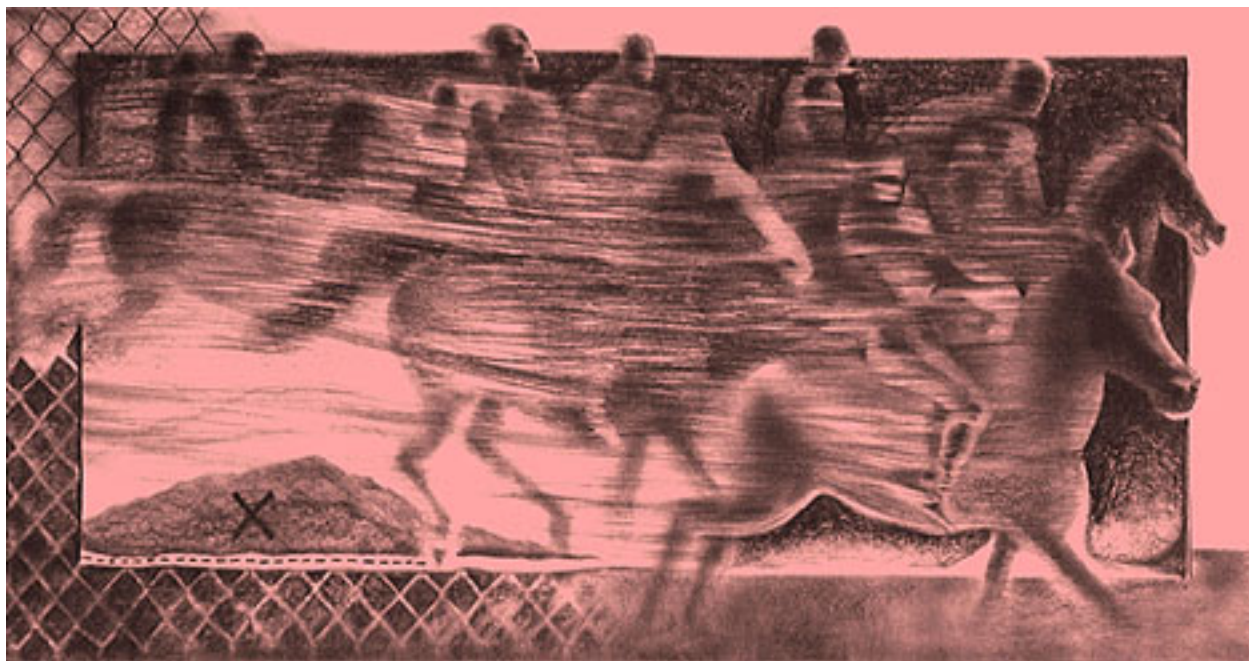


Visiones

Jorge Estrada

1997

Silver-gelatin print
16 ½ x 21 inches



El Cerro del Centinela, antiguo y viejo guardián del tesoro de Joaquín Murrieta

Carlos Coronado

2000

Graphite and ink on paper
35 x 80 inches



Mount Signal

Douglas Bliven

1997

Color Photograph
17 ½ x 29 ½ inches



Reto realizado

Maricela Alvarado

Oil on canvas
50 x 34 inches



Signal Mountain

Gary Liggett

1996

Oil on canvas board
18 x 24 inches



Whispers at Mount Signal (with text)

Shelley Lannan (Bishop)

1995

Mixed media on Paper
Approximately 30 x 55 inches



Untitled

Antonio Rodriguez Tapia

1999

China ink on paper



Mount Signal / Cerro del Centinela and the All-American Canal

View from Imperial Valley, California